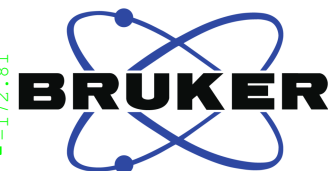


F19.uc1 CDC13 (C:\700) tds 5

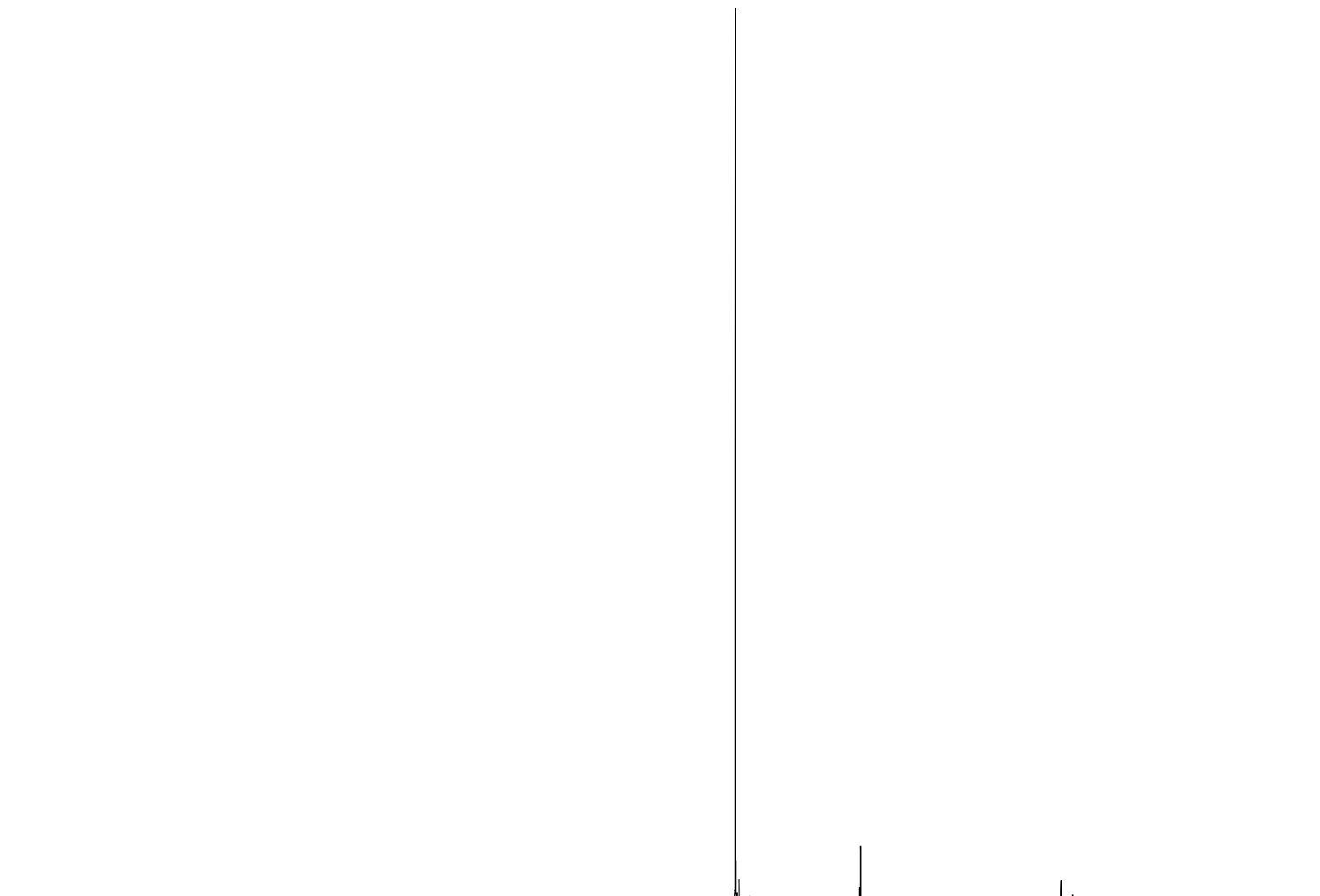
-111.95  
-111.94  
-111.93  
-112.00  
-112.01  
-112.02  
-112.03  
-112.04  
-112.05  
-112.10  
-112.11  
-112.12  
-112.13  
-112.14  
-112.15  
-112.16  
-112.17  
-112.18  
-112.19  
-112.20  
-112.21  
-112.22  
-112.23  
-112.24  
-112.25  
-112.26  
-112.27  
-112.28  
-112.29  
-112.30  
-112.31  
-112.32  
-112.33  
-112.34  
-112.35  
-112.36  
-112.37  
-112.38  
-112.39  
-112.40  
-112.41  
-112.42  
-112.43  
-112.44  
-112.45  
-112.46  
-112.47  
-112.48  
-112.49  
-112.50  
-112.51  
-112.52  
-112.53  
-112.54  
-112.55  
-112.56  
-112.57  
-112.58  
-112.59  
-112.60  
-112.61  
-112.62  
-112.63  
-112.64  
-112.65  
-112.66  
-112.67  
-112.68  
-112.69  
-112.70  
-112.71  
-112.72  
-112.73  
-112.74  
-112.75  
-112.76  
-112.77  
-112.78  
-112.79  
-112.80  
-112.81



Current Data Parameters  
NAME RP237 char  
EXPNO 16  
PROCNO 1

F2 - Acquisition Parameters  
Date\_ 20230209  
Time 3.15 h  
INSTRUM AVNEO700  
PROBHD Z154039\_0001 (  
PULPROG zg  
TD 1250000  
SOLVENT CDC13  
NS 8  
DS 0  
SWH 156250.000 Hz  
FIDRES 0.250000 Hz  
AQ 4.0000000 sec  
RG 101  
DW 3.200 usec  
DE 18.00 usec  
TE 298.1 K  
D1 36.00000000 sec  
TD0 1  
SFO1 658.9215073 MHz  
NUC1 19F  
P1 14.60 usec  
PLW1 9.69999981 W

F2 - Processing parameters  
SI 524288  
SF 658.9874060 MHz  
WDW EM  
SSB 0  
LB 0.30 Hz  
GB 0  
PC 1.00



0 -20 -40 -60 -80 -100 -120 -140 -160 -180 ppm

3.62  
0.16

4.95

1.11  
0.15